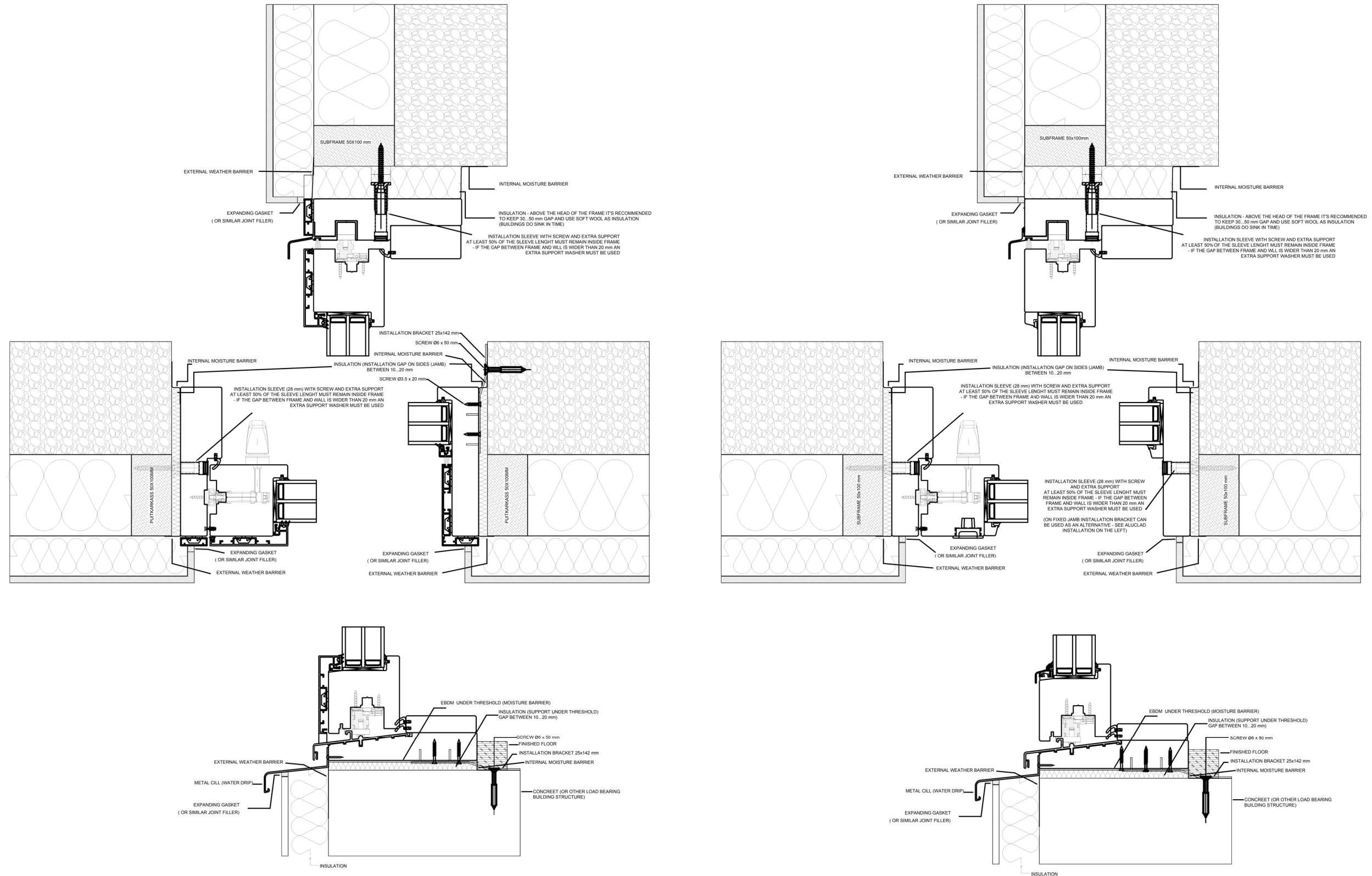


# VIKING INNOVA SLIDING DOOR - INSTALLATION SKETCHES



INNOVA SLIDING DOOR THRESHOLD NEEDS TO BE SUPPORTED UNDERNEATH TO AVOID BENDING

NB! ATTENTION TO THRESHOLD DEPTH AND THE FACT THAT SLIDING DOOR LEAF MOVES ON THE EXTERNAL SIDE - SUPPORT MUST BE PROVIDED BOTH INNER AND EXTERNAL SIDE OF THRESHOLD.

(IF ANY KIND OF SUBFRAME IS USED IT MUST BE FIXED WITH THE LOAD BEARING BUILDING STRUCTURE IN A MANNER WHICH AVOIDS BENDING)

Installation sketches here are illustrations - each and every time the actual installation depends on the actual wall construction. Consult with the supplier before placing the order!